

GREENTECH DRILL 4000

World Class

GREENTECH

TM



- **Applications** : Deep hole drilling, De-watering and monitoring in the mines, Cathodic protection
- **Drilling Method** : DTH Drilling / Rotary Drilling
- **Hole Diameter** : 165 - 508 mm (6 ½" - 20")
- **Maximum Depth** : 1350 m @ 165 mm (6 ½") dia

A super performer bore hole drilling rig with a pull up force of 42200 kg capable of drilling 6 ½" diameter up to 1350 m depth. Drilling hole size range from 6 ½" to 20".

GOOD TO DRILL

Feed System

World Class

GREENTECHTM



- 2 x Double acting hydraulic cylinder with 1:2 rope reeving system
- **Pull Up Force : 42200 kgf (92840 lb.f) @ 210 bar**
- **Pull Down Force : 18500 kgf (40700 lb.f) @ 210 bar**
- **Pull Up Speed : 42 m/min**
- **Pull Down Speed : 70 m/min**
- Holdback arrangement to control weight on drill bit.
- Rapid and slow head travel with micro feed arrangement.
- Single rope tensioner for top and bottom slag reduction.
- Replaceable nylon guide block to reduce wear on the mast.
- Multiple lubrication points for easy maintenance.

Rotary Head

World Class

GREENTECHTM



- Fabricated steel body with spur gear reduction and oil bath lubrication type gearbox along with top air entry and bottom entry mud swivel having ID: 90 mm spindle with thread connection of API 6 5/8 Reg driven by two hydraulic motor.

Maximum Torque : 13700 Nm

Rotation Speed : 0 - 120 rpm Fine controlled

- Equipped with Tilting Rotary Head

Mast Assembly

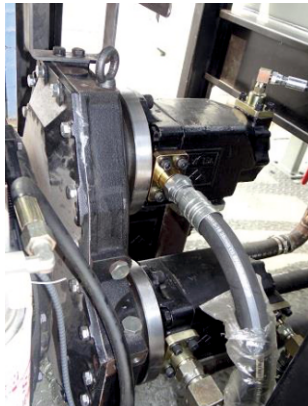
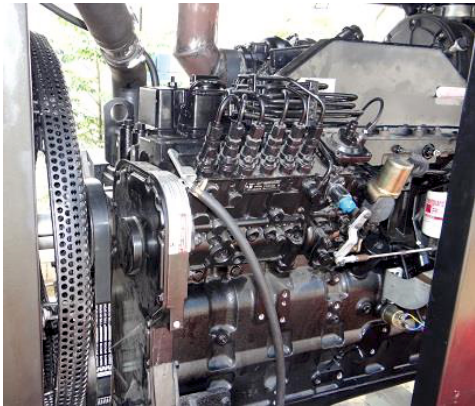
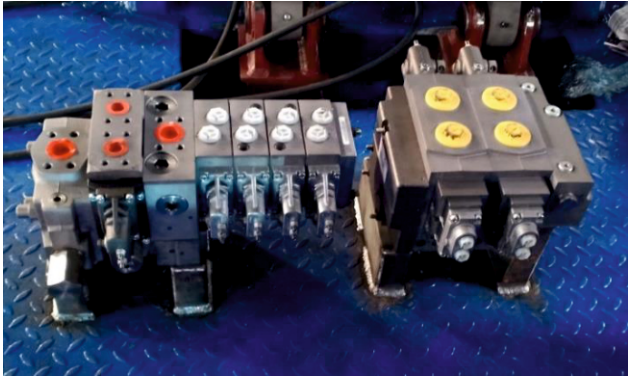
- Strong structural steel twin tubular box type construction
- **Mast Overall Length** : 10000 mm
- **Rotary Head Travel** : 7500 mm
- **Rod Handling** : 6 meters
- **Centralizer** : 16" Expandable up to 24" (Split type)



Hydraulic System

World Class

GREENTECH™

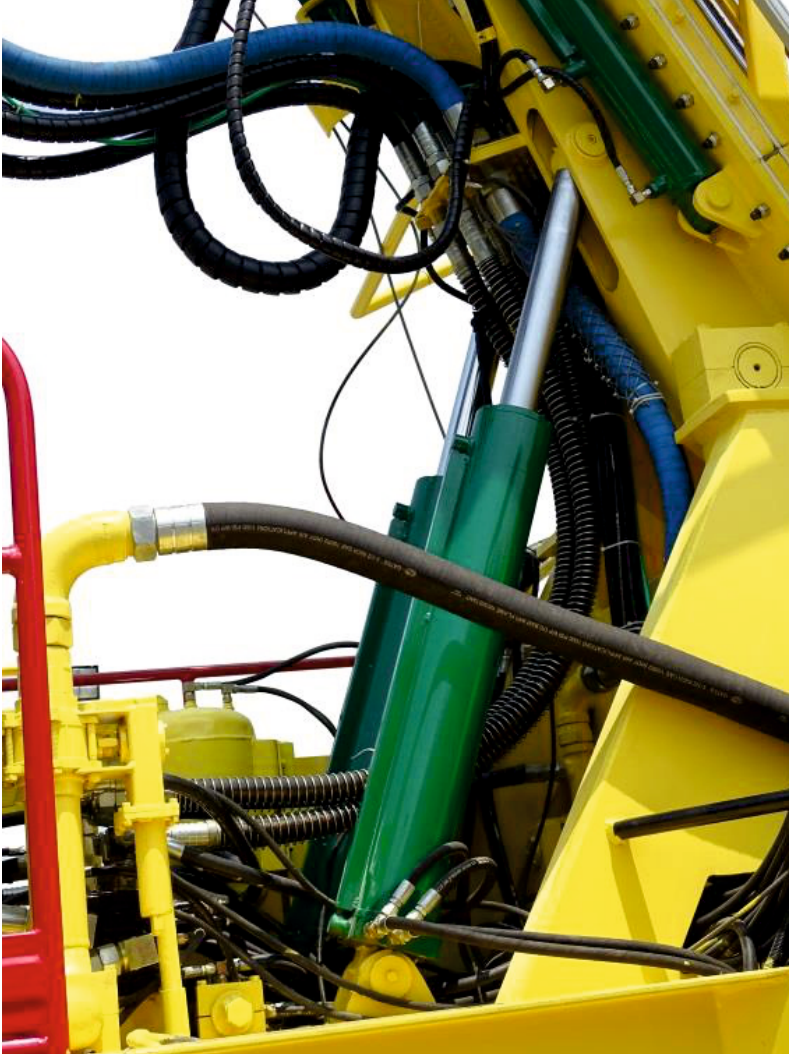


- 2 x Fixed displacement pump for Feed and Rotation.
- 1 x Fixed displacement pump for Auxiliary operations
- 1 x Fixed displacement pump for Hydraulic cooler
- Pilot operated proportional control valve for feed and rotation
- **Maximum System Pressure : 3045 psi (210 bar)**
- **Hydraulic Oil cooler : 120 gpm**
- **Hydraulic Tank capacity : 600 litres**
- PVG 256 & 120-32 combination valves

Mast Raising cylinder

World Class

GREENTECHTM



- Mast is raised and lowered by two hydraulic cylinder.



Leveling Jack

World Class

GREENTECHTM



- 4 x Hydraulic levelling jacks are provided for quick setting and levelling with heavy duty telescopic guides.
- 2 x lug mounted hydraulic jacks are provided for truck support.
- 2 x lug mounted hydraulic jacks are provided for mast stabilization.

Control Panel

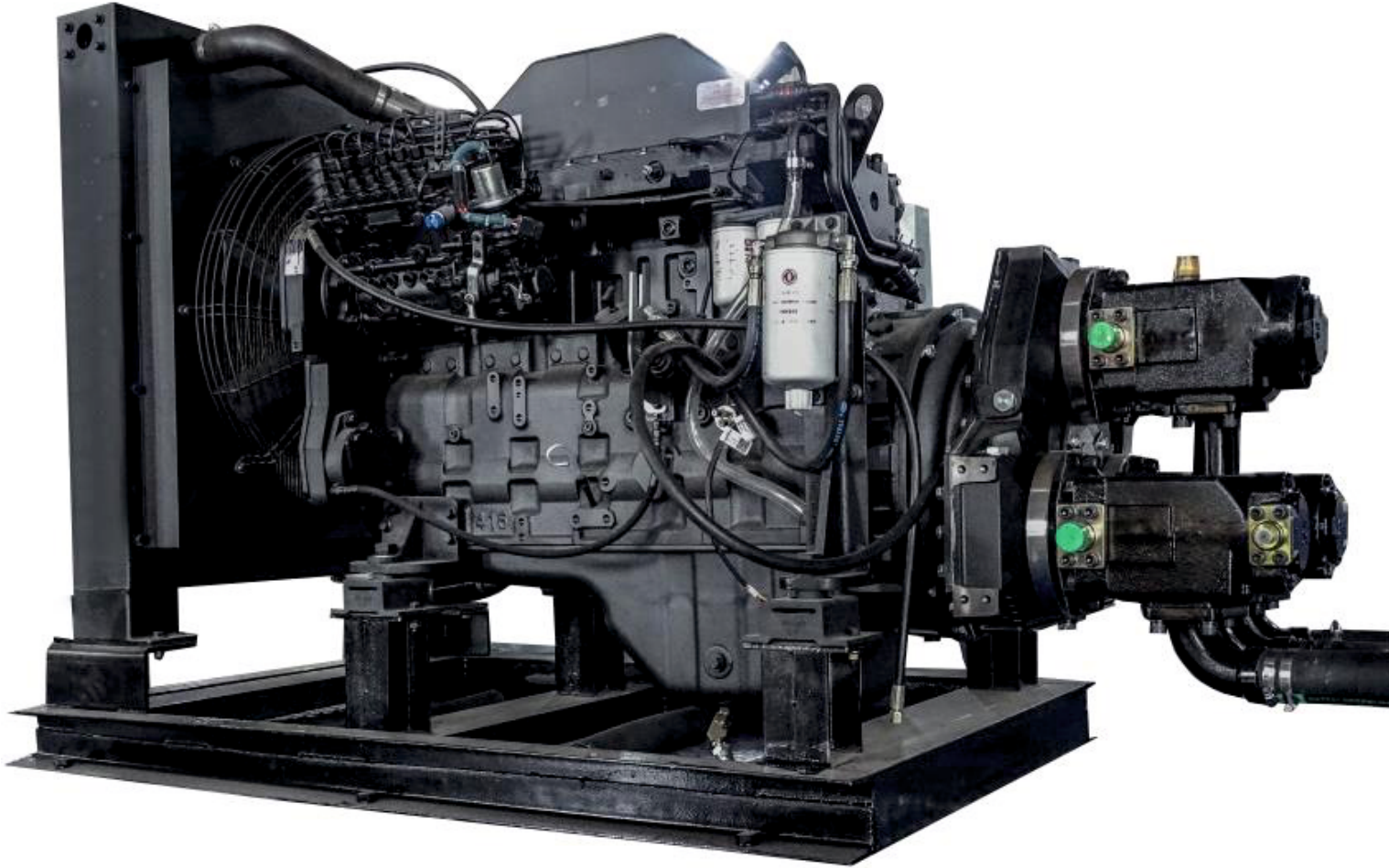
- Swing out - Centralized control panel is at rear end of the equipment for convenient view of drilling table.
- Locking system for the safety of operator.
- Hydraulic and Deck Engine gauges for conspicuous viewing.



PRIME MOVER

World Class

GREENTECHTM



DECK ENGINE

- **Make :** Cummins
- **Power :** 430 HP
- **No. of cylinder :** 6

MUD PUMP



Hydraulic operated GT 250 Mud Pump (10" x 7")

- Stroke : 10" (254 mm)
- Liner size diameter : 7" (178 mm)
- Max. Displacement : 1980 lpm
- Max. working pressure : 292 psi (20.53 kg/sq.cm)

Truck Op?on

World Class

GREENTECHTM

- Make: SINOTRUK Howo
- Engine HP: 400 HP
- Drive: Left Hand Drive
- Wheel Drive: 8x4
- Tyre size: 12 R 20



